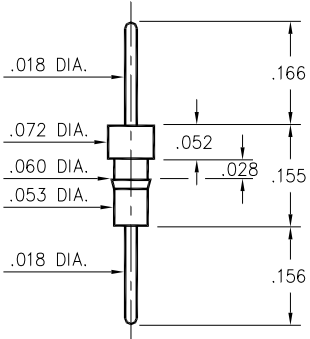


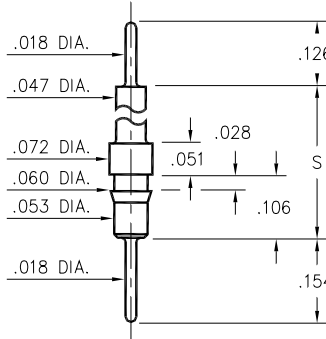
0504/0505



Basic Part Number	Pin Material
0504-0	Ph Br. 544
0505-0	Brass 360

050X-0-00-XX-00-00-03-0
Press-fit in .057 mounting hole

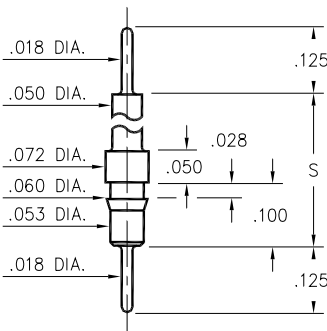
5510/5511



Basic Part Number	Standoff Height S
5510-0	.331
5511-0	.606

551X-0-00-XX-00-00-03-0
Press-fit in .057 mounting hole

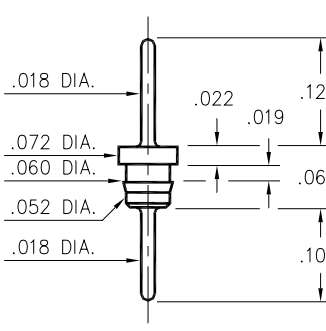
4259



Basic Part Number	Standoff Height S
4259-1	.210
4259-2	.335
4259-3	.585
4259-4	.835

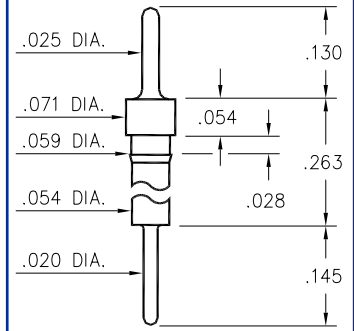
4259-X-00-XX-00-00-03-0
Press-fit in .057 mounting hole

3516



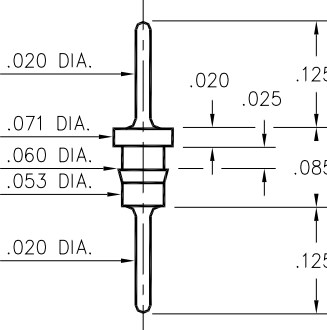
3516-0-00-XX-00-00-03-0
Press-fit in .057 mounting hole

8859



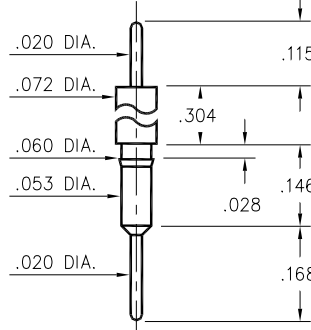
8859-0-00-XX-00-00-03-0
Press-fit in .056 mounting hole

6585



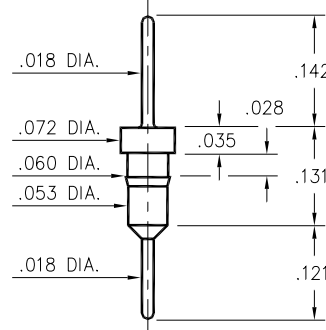
6585-0-00-XX-00-00-03-0
Press-fit in .057 mounting hole
Pin material is Ph Br 544 (B2)

3403



3403-0-00-XX-00-00-03-0
Press-fit in .057 mounting hole

3404



3404-0-00-XX-00-00-03-0
Press-fit in .057 mounting hole

SPECIFICATIONS

PIN MATERIAL:
Brass Alloy 360, 1/2 Hard
(Except where noted)

DIMENSION IN INCHES
TOLERANCES ON:
LENGTHS: ±.005
DIAMETERS: ±.002
ANGLES: ± 2°

ORDER CODE: XXXX - X - 00 - XX - 00 - 00 - 03 - 0

BASIC PART # →

SPECIFY PIN FINISH:
01 200μ" TIN/LEAD OVER NICKEL
15 10μ" GOLD OVER NICKEL
21 20μ" GOLD OVER NICKEL
34 50μ" GOLD OVER NICKEL